

# All-Atlantic Ocean Research Forum

**FROM POLE TO POLE**

6 - 7 February 2020 #AtlanticAll

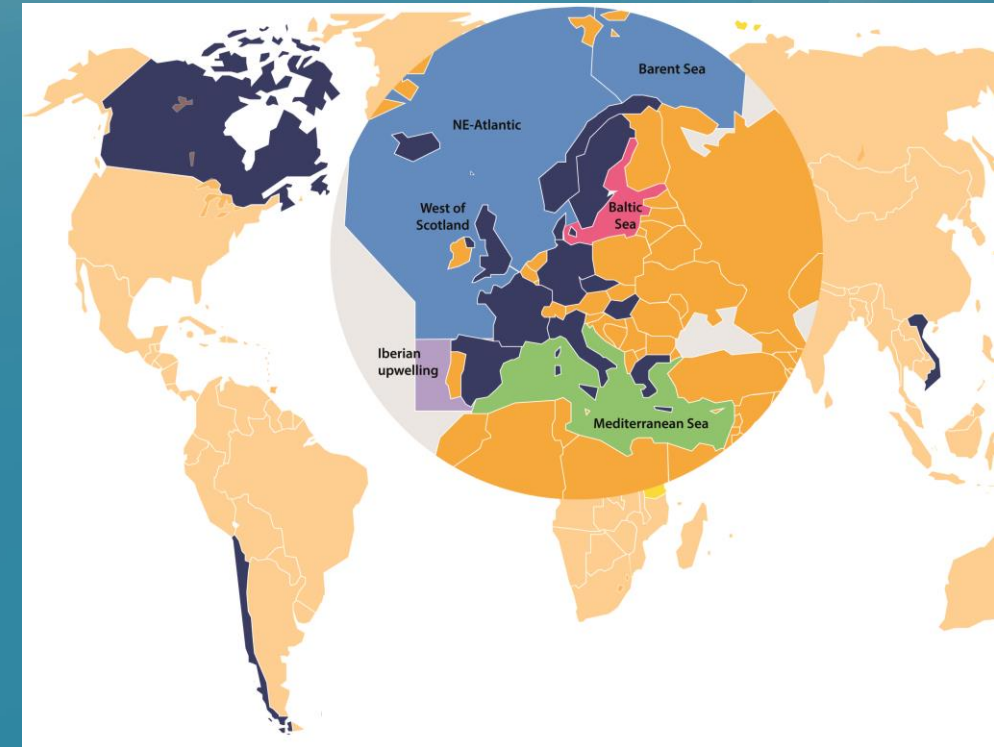
Andrea Gerech, PhD, Project Manager

# ClimeFish

Co-creating a decision support framework to ensure sustainable fish production in Europe under Climate Change

## ClimeFish in a nut shell

- 21 partners, including Canada, Chile and Vietnam; FAO, ICES and FEAP
- 15 case studies across Europe
- Seafood production in three sectors: Marine fisheries and aquaculture, and fresh water lakes and ponds
- 18 finfish and shellfish species



## ClimeFish key exploitable outcomes

- Forecasting models for production
- The ClimeFish Decision Support Framework including the Decision Support Software
- CEN voluntary standard for making Climate Adaptation Plans
- Climate Adaptation Plans for 7 case studies
- Guidelines for establishing legal good practice when resources move and/or diseases occur



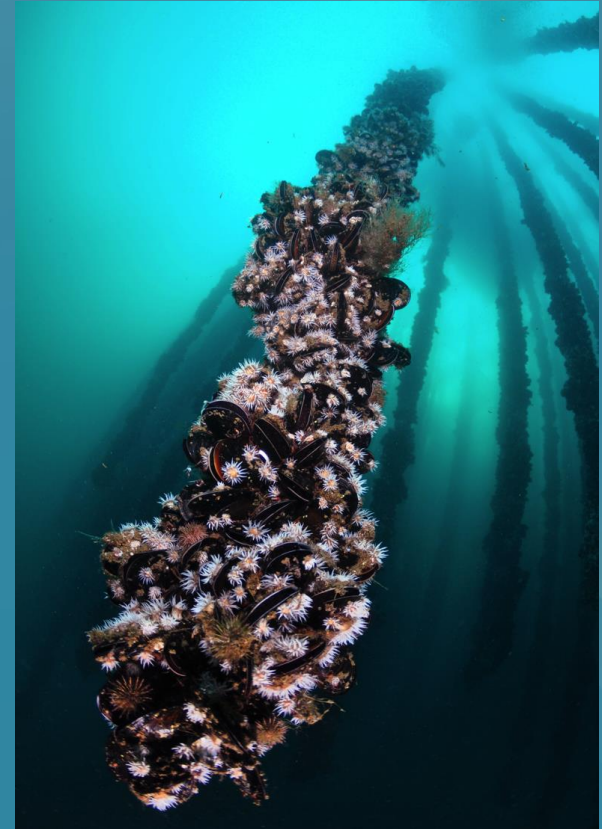
# Galician Mussels Aquaculture produces > 225,000 tons/year

## Threats:

1. Toxic phytoplankton blooms
2. Predation on and lack of mussel seeds
3. Detachment of mussels, and loss of rafts during storms

## Opportunity:

1. Mussels growth rate will increase 5-10%







# Thank you!

[www.ClimeFish.eu](http://www.ClimeFish.eu)

[ClimeFish@uit.no](mailto:ClimeFish@uit.no)

[@ClimeFish](https://twitter.com/ClimeFish)

All-Atlantic Ocean Research Forum  
**FROM POLE TO POLE** 6 - 7 February 2020 #AtlanticAll